



How to install Windows 7 Professional using VMware Workstation 7.0

Intended Audience: This document is designed to help an entry level student install Windows 7 Professional as a virtual PC within VMware Workstation 7.0 (hereafter referred to as VMWare). Students that are taking Principles of Information Security will likely be the biggest audience.

Introduction: Throughout your course work you will be using the Windows operating systems, especially Windows 7 Professional. Most of the CIT Networking/Unified Communication Specialist classes, including the core course Principles of Information Security, will require you to perform hands-on lab activities using the Windows 7 Professional operating system within a virtual PC environment running under VMware. This document will help you install Windows 7 Professional in such an environment.

Prerequisites: The installation of Windows 7 Professional as a virtual PC requires that you have VMware installed. The procedures detailed in this document also require that you have a software serial number for Windows 7 Professional. NTC will provide you with this serial number, which has no expiration date. These instructions will assume that you do not have this serial number, so there will be instructions on getting it.

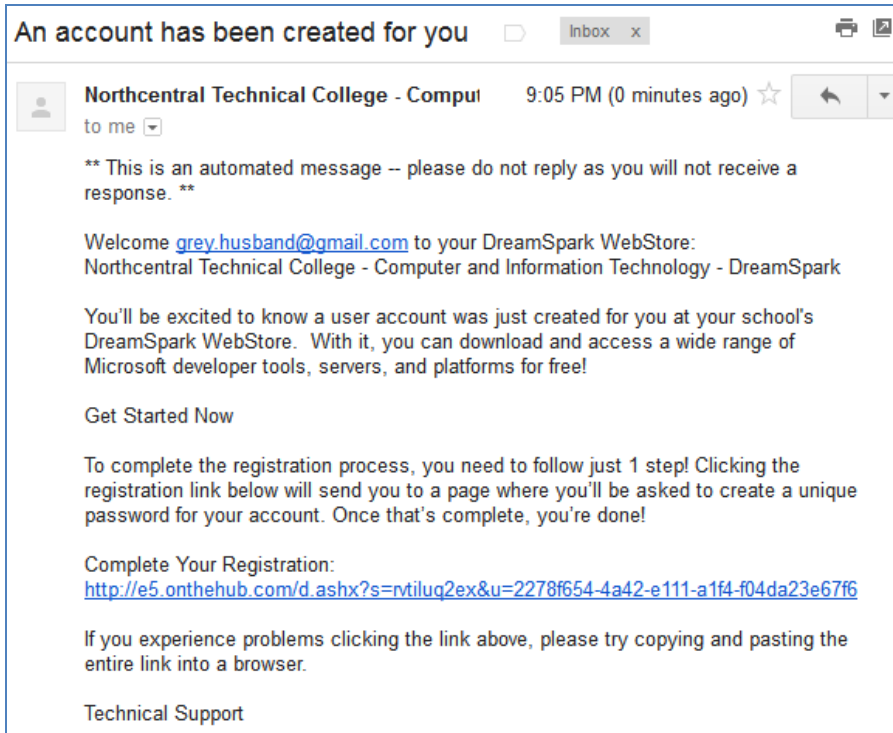
You are also required to have a properly formatted, external, USB hard drive.

Instructions: This is a step-by-step guide. You are advised to perform the exercises precisely as indicated. Please read and follow the following installation steps closely.

SECTION 1: OBTAIN THE WINDOWS 7 PROFESSIONAL SERIAL NUMBER.

Please follow the procedures detailed below in the given sequence:


1. Visit your NTC Student e-mail and look for a message from **Northcentral Technical College - Computer and Information Technology - DreamSpark**. It should look like the image below.




Note: If you do not receive this e-mail contact your instructor and skip to section 2 - you can come back to this section after receiving the above mentioned e-mail.

2. From within this e-mail click on the first **e5.onthehub.com** link provided. This link will allow you to complete your registration and login to the MSDN web site. See image below.

3. After you click **Register** you will be logged on to the MSDN web site, which is called Microsoft DreamSpark. See image below.


Welcome **grey.husband@gmail.com** [Sign Out](#) | [English](#) | 

DREAM

 today. Create tomorrow. 
Microsoft DreamSpark®

 Tweet < 0

 Like


 Sign Up to see what your friends like.

Announcements

- [Announcing the new DreamSpark Program](#) 2012-01-16
- [New Secure Download Manager](#) 2012-01-13

Software

[Mail Order](#)

 Thank you for registering.

Categories

Popular (17)

[Operating Systems \(20\)](#)

[Developer Tools \(59\)](#)

[Servers \(46\)](#)

[Applications \(32\)](#)

[Other \(4\)](#)

[All \(157\)](#)

Microsoft Corporation



Microsoft Windows 7



Microsoft Visual Studio 2010



Microsoft Visio 2010



Microsoft Project 2010



Microsoft Expression Studio 4



Microsoft XNA Game Studio 4

4. In the Microsoft Corporation window you will notice the popular downloads, including Windows 7. Click on the Microsoft Windows 7 icon. If you do not see the Microsoft Windows 7 option shown in the image above, click on Operating Systems and look for it there.
5. After clicking the Microsoft Windows 7 icon you will get a list of different downloads for Microsoft Windows 7 Professional. Click the **Add to Cart** link next to the 32 bit edition of Microsoft Windows 7 Professional. See image below.

Software Mail Order

[Microsoft Windows 7 Professional](#)
[Microsoft Windows 7 with Service Pack 1 Debug/Checked Build](#)

Microsoft Windows 7 Professional



Simplify everyday tasks: find something instantly, compare documents side-by-side, or easily back-up your complete system over a network. Enjoy a PC that works the way you want it to; supports 64-bit technologies and offers XP Mode for your business productivity applications. Make new things possible: watch Internet TV, pause, rewind, and record TV or use Touch to interact with your PC in new ways.

Download

[Microsoft Windows 7 Professional 32-bit \(English\) - DreamSpark](#)

Available to: Students/Faculty/Staff

Free

Quantity:

Add To Cart

[Microsoft Windows 7 Professional 64-bit \(English\) - DreamSpark](#)

Available to: Students/Faculty/Staff

Free

Quantity:

Add To Cart

[Microsoft Windows 7 Professional with Service Pack 1 32-bit \(English\) - DreamSpark](#)

Available to: Students/Faculty/Staff

Free

Quantity:

Add To Cart

[Microsoft Windows 7 Professional with Service Pack 1 64-bit \(English\) - DreamSpark](#)

Available to: Students/Faculty/Staff

Free

Quantity:

Add To Cart

6. After clicking **Add to Cart**, you will be prompted with the Your Cart window shown below. Click **Check Out**.

Home | Your Account | Shopping Cart | Help | Product Search

Welcome **gregg.husband@gmail.com** [Sign Out](#) | English |

DREAM today. Create tomorrow.

Microsoft DreamSpark

Software Mail Order

Your Cart

	Quantity	Unit Price	Price	
Microsoft Windows 7 Professional 32-bit (English) - DreamSpark - Download Date Added: 2012-01-18 5:25 PM	<input type="text" value="1"/>	Free	Free	Remove
Extended Access Guarantee (24 months) - Included 24 months of access to your download and/or key				
<input type="button" value="Update Cart"/>		Subtotal: \$0.00		

7. In the **DreamSpark EULA** window agree to the terms listed.
8. In the **Windows 7 Upgrade Considerations** window, click **Continue**.
9. In the **Order** window click **Proceed with Order**.
10. In the **Receipt** window you will find the Product Key that you will need to activate your Windows 7 Professional. Leave this window open for section 2. See image below

Messages
Order
Receipt

i Your order has been placed and a confirmation email will be sent to you shortly. You may wish to print this page for your records. Detailed information about all of your orders can always be found under Your Account.

Order Summary

Order Date: 2012-01-18 5:33 PM
Central Standard Time

Order Number: 100054955491

Order Information

Name: Gregg Husband
Email: gregg.husband@gmail.com

Items All prices are in US Dollars
[Start Download](#)

	Quantity	Unit Price	Amount
<div> <p>Microsoft Windows 7 Professional 32-bit (English) - DreamSpark -</p> <p>Download</p> <p>Extended Access Guarantee (24 months) - Included 24 months of access to your download and/or key. Expires 2014-01-18</p> <p>Product Key: Product key will appear here.</p> <p>Messages:</p> <ul style="list-style-type: none"> Windows 7 Upgrade Con DreamSpark EULA <p>Agreement Number: 40031</p> </div>	1	\$0.00	\$0.00

11. If you are working from a Windows box you can download the Windows 7 Professional installation image by clicking **Start Download**. Follow the instructions that you will be given. After the download is complete, you will have the installation image that you will need for Section 2. See images below.

Download Your Software
[FAQs](#)

DREAM today. Create tomorrow. ➔

Microsoft DreamSpark

Order Number: 100054955491

Order Date: 2012-01-18

Download Location: C:\Users\husband\Downloads [Change Location](#)

Microsoft Windows 7 Professional 32-bit (English)

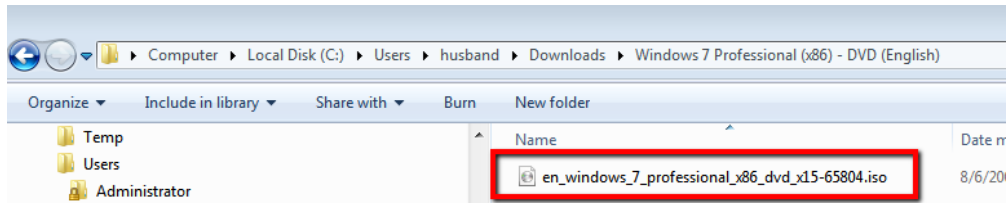
Extended Access Guarantee (24 months) - Included
Expires 2014-01-18

Size: 2 GB

Done

[Launch](#)

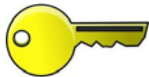
C:\Users\husband\Downloads



If you have difficulty downloading the .iso image shown above, please stop by room A113 at the Wausau campus and ask to borrow the POIS-Installation DVD from Jessica Benton and then copy the installation image from the DVD to your computer and then return the DVD to Jessica. If you are at a satellite campus, ask the front desk for this DVD. These DVDs will be made available the first day of the semester in the Wausau office and possibly up to the third day of the semester for the satellite campuses.

Proceed to Section 2.

Click on the image or link below to watch this procedure.

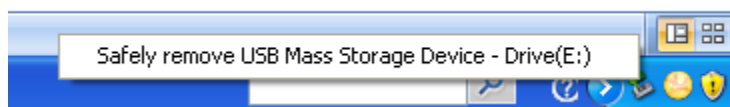


<http://coursecontent.ntc.edu/CIT/husband/pois/lp0/Win7ProductCodeRetrieval/Win7ProductCodeRetrieval.html>

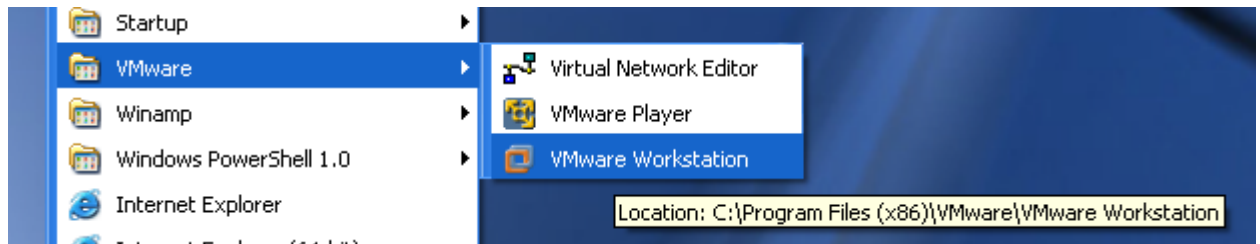
SECTION 2: INSTALL THE WINDOWS 7 PROFESSIONAL WITHIN VMWARE.

Please follow the procedures detailed below in the given sequence:

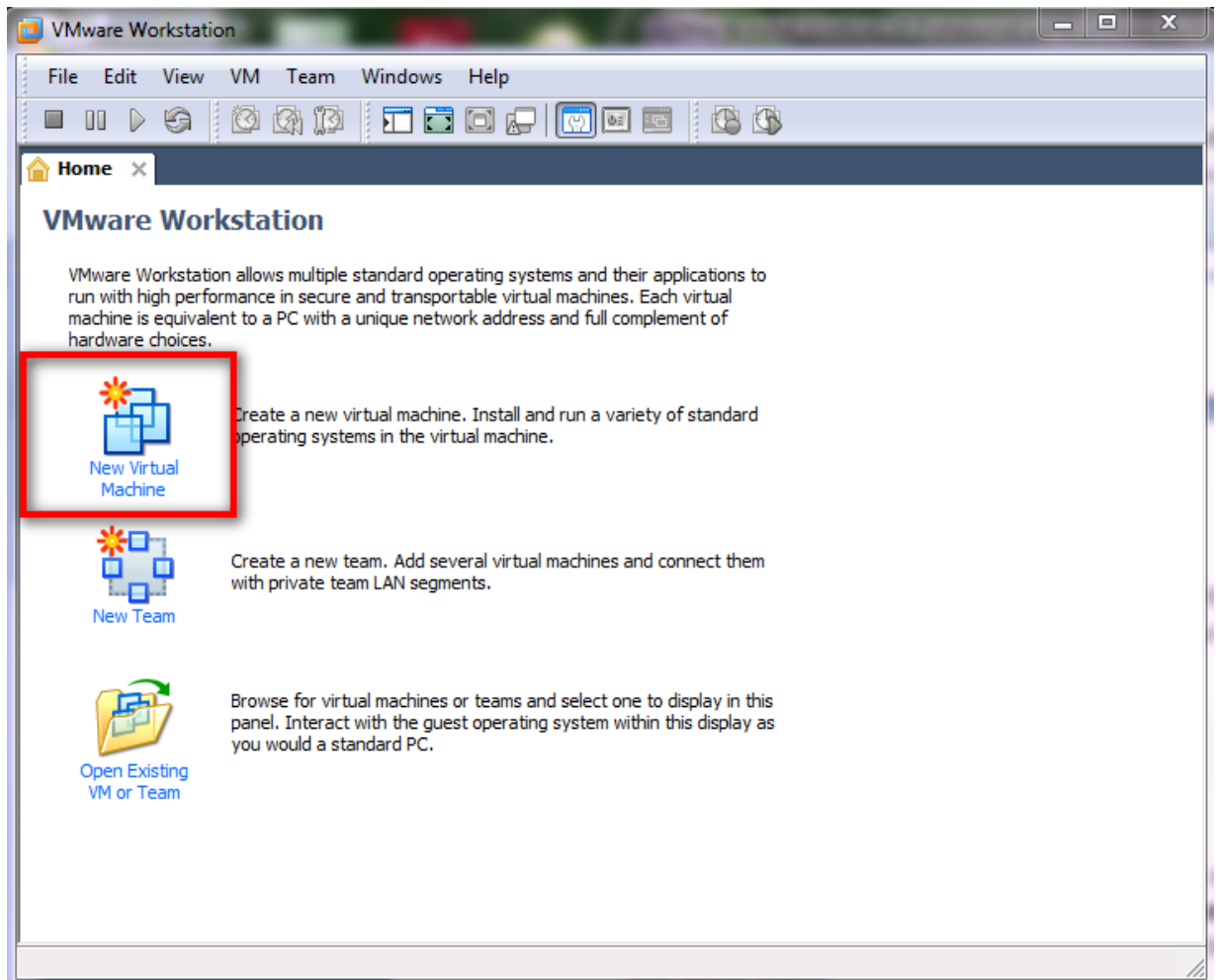
1. Hook up your USB hard drive to your USB port on your computer and plug it into the power supply if necessary. Some USB hard drives do not have a power supply and will get the power needed from the USB connection. If you have a cable with two USB connectors, one will be for power (usually the thinner of the two cables) while the other will be used for data transfer. The USB hard drive should automatically be recognized and given a drive letter. When this happens, you will see a green arrow in your tool bar on the bottom right. If you place your cursor over this green arrow it will show you that this is how you properly dismount the hard drive. If you click on the arrow it will show you the drive letter. If you click on the drive letter you will dismount the hard drive. See image below.



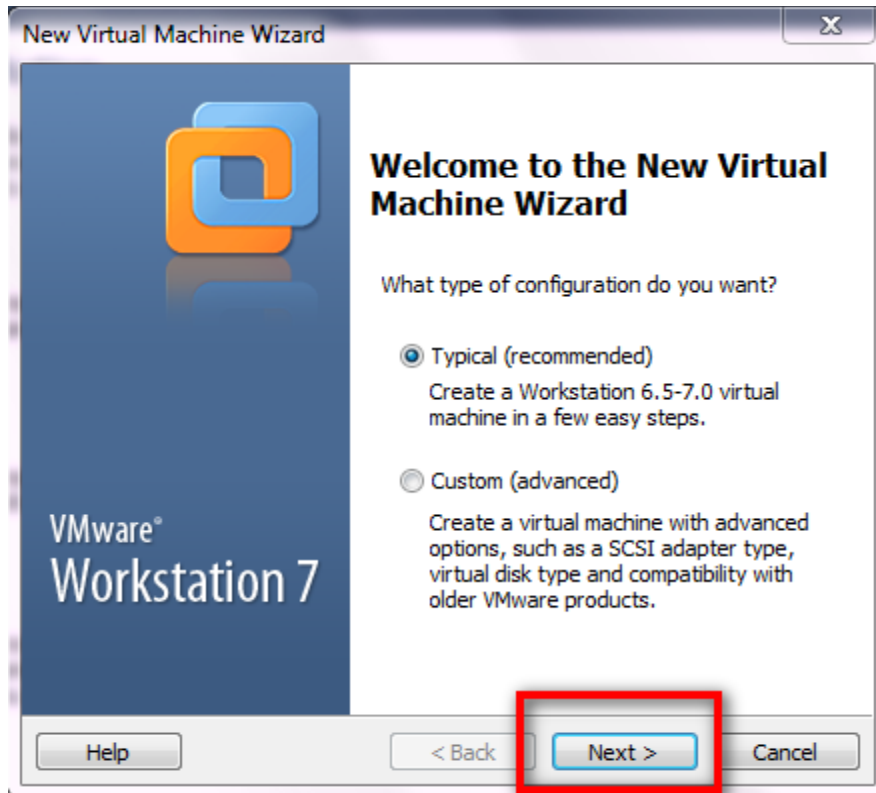
2. Startup your VMware Workstation software. If you do not have this software installed, please read How to install VMware Workstation 7.0. If you are working from a lab computer, the software should have already been installed. See image below.



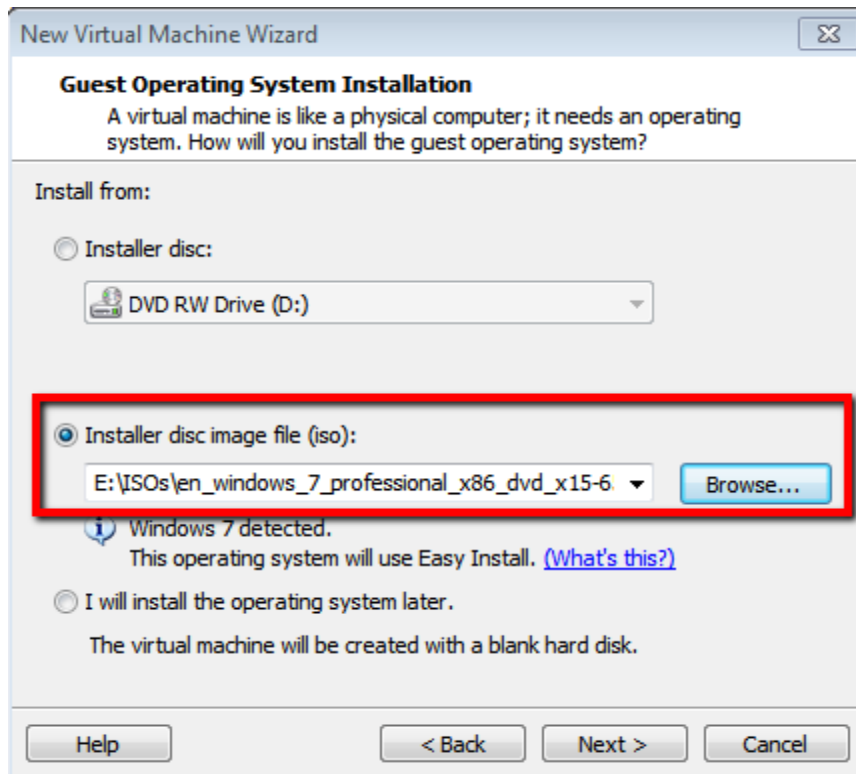
3. Click on New Virtual Machine to build the container that will hold your virtual operating system. This will only have to be done once per virtual operating system that you build. For now, you will only be building one virtual operating system. See image below.



4. In the Welcome to the New Virtual Machine Wizard window, take the default of Typical by clicking Next. See image below.



5. In the Guest Operating System Installation window, click the radio button next to Installer disc image file (iso). Click the Browse button, locate and select the Windows 7 Professional image file (.iso) that you had either downloaded from the MSDN web site or that had been given to you in the beginning of the semester. This .iso should be named with a prefix of **en_windows_7_professional_x86_dvd**. If you do not have this file, contact your instructor immediately. You cannot continue without this file! Once selected, click **Next**. See image below.



6. In the Easy Install Information window, enter the product key that you obtained from the MSDN web site (see Section 1). If you still have the Receipt window open listing the Windows 7 Professional product key, you may copy and paste it, otherwise simply type it in. Change the version to be Windows 7 Professional. Enter a user name, such as your last name, and a password of **p@ssw0rd** (0=zero). Click **Next**. See image below.

The screenshot shows the 'New Virtual Machine Wizard' window, specifically the 'Easy Install Information' step. The window has a title bar with 'New Virtual Machine Wizard' and a close button. Below the title bar, the text 'Easy Install Information' is displayed, followed by 'This is used to install W'. The 'Windows product key' field is highlighted with a red box and the text 'Enter Product Key here.' with an arrow pointing to it. Below this field is a dropdown menu for 'Version of Windows to install' set to 'Windows 7 Professional'. Under 'Personalize Windows', there are fields for 'Full name:' (containing 'husband'), 'Password:' (masked with dots), and 'Confirm:' (masked with dots). A checkbox for 'Log on automatically (requires a password)' is at the bottom. Navigation buttons 'Help', '< Back', 'Next >', and 'Cancel' are at the bottom.

Note: if you do not have the product key at this time, you can still continue, you will just have to enter it manually when you activate the operating system. Your operating system will still function normally without activation for up to 30 days.

7. In the Name Virtual Machine window, either keep the default virtual machine name or change it to your liking. Change the Location to be where you would like to store the virtual machine files using the following guidelines:
 - The drive letter should be the drive letter that represents your USB hard drive (see step 1).
 - The directory structure where the virtual machine files will be stored should have a parent directory called "Virtual Machines" or "VMs" and have a subdirectory named after the virtual machine's name. You may wish to include multiple subdirectory names to identify the semester and the class. See the example shown below.

WARNING: DO NOT TAKE THE DEFAULT LOCATION.

New Virtual Machine Wizard

Name the Virtual Machine
What name would you like to use for this virtual machine?

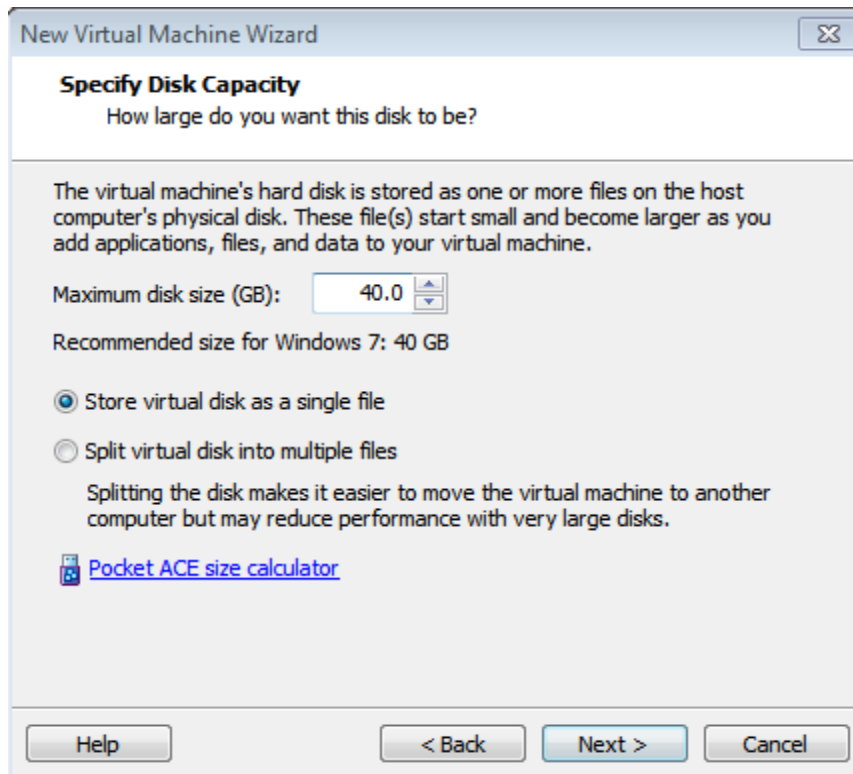
Virtual machine name:
Windows 7 Professional - POIS

Location:
E:\VMs\Spring2012\POIS\Windows 7 Professional - POIS Browse...

The default location can be changed at Edit > Preferences.

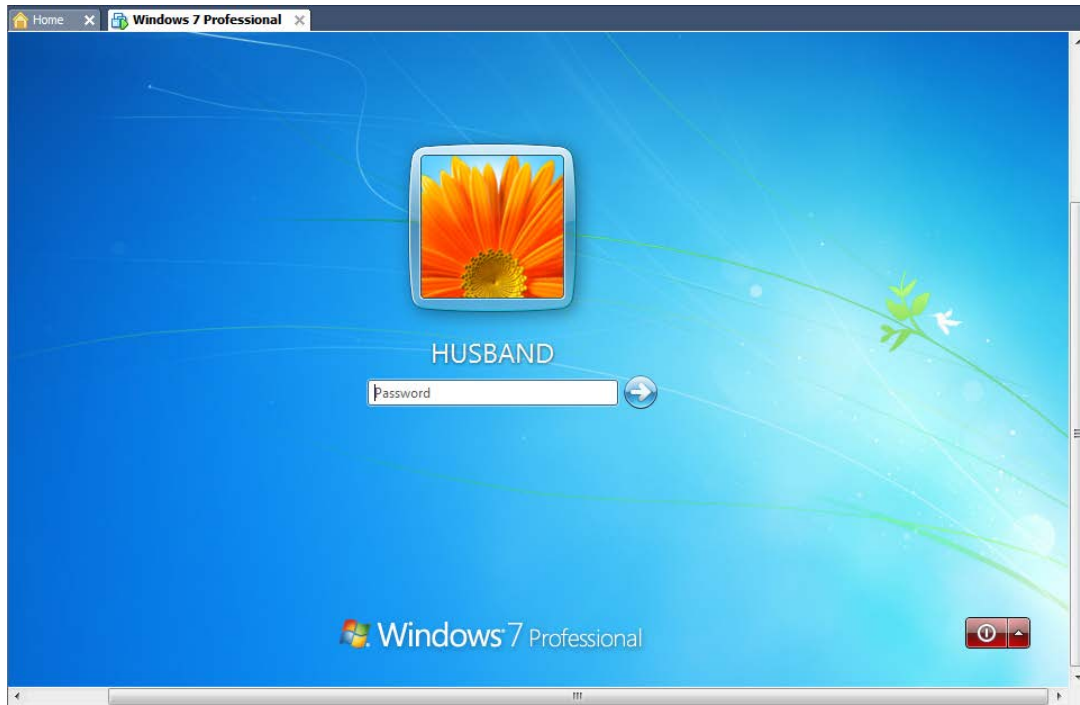
< Back Next > Cancel

8. In the Specify Disk Capacity window, take the default of 40 GB disk size and take the default method of storing the virtual disk file. Click **Next**. See image below.



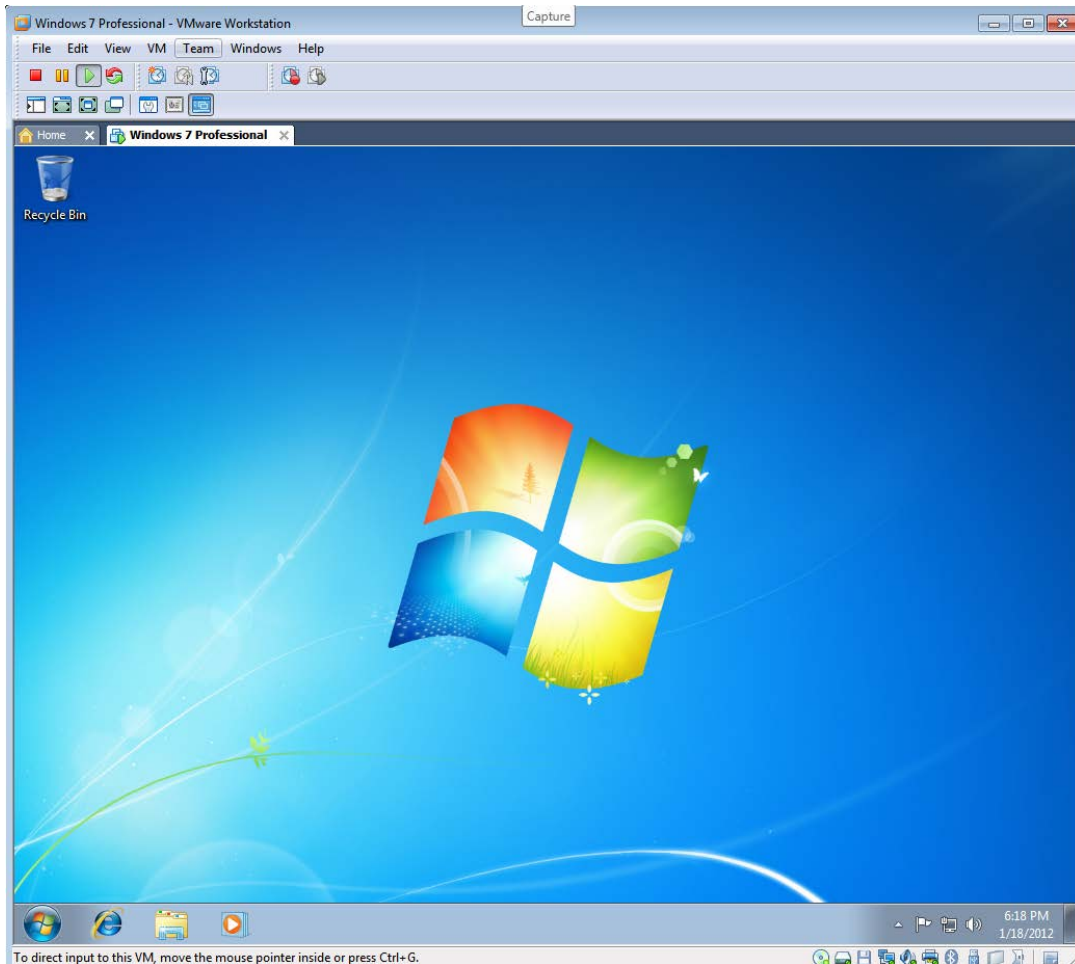
Note: In the previous window you may have noticed the two storage options of **Store virtual disk as a single file** or **Split virtual disk into multiple files**. If the first option is selected by default, then the file system on your USB hard drive is NTFS, this is the ideal. If the second option is selected by default, then your file system is FAT. The second option will work, but will not be as efficient as the first. If your degree choice is Networking/Unified Communications Specialist, then you may want to consider aborting this process, get your drive formatted NTFS, and then restart this section. It is beyond the scope of this document to step you through the formatting process, please see your instructor for assistance if necessary.

9. In the Ready to Create Virtual Machine window, review your settings and then click **Finish**. After you click Finish, the install process will start and continue automatically.
10. After the installation is complete, your virtual Windows 7 Professional computer will restart and then prompt you to login as your user name. See image below.

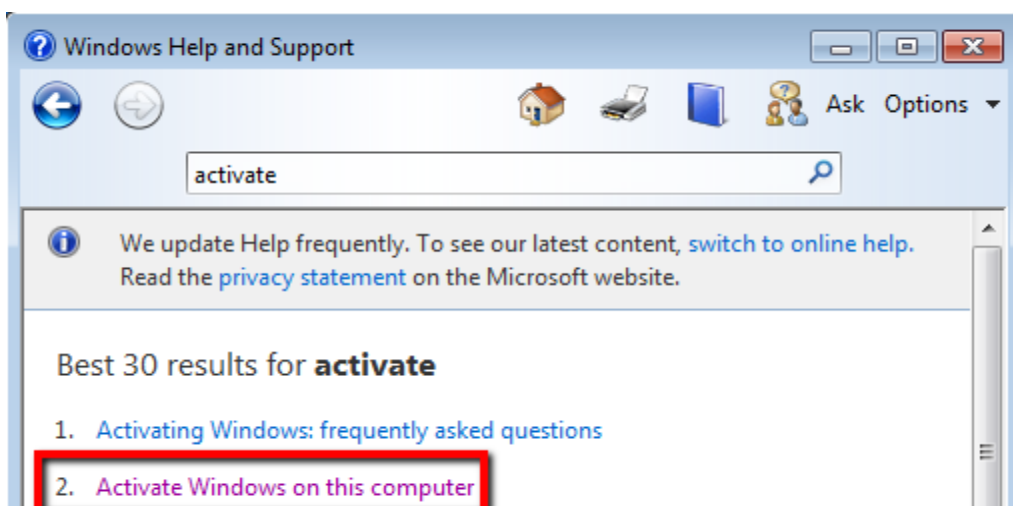


11. To login you must first click inside the Windows 7 Professional virtual PC window, enter the password you used in step 6 (p@ssw0rd) and then click the blue arrow. You should successfully get logged in and your screen will look like the image below.

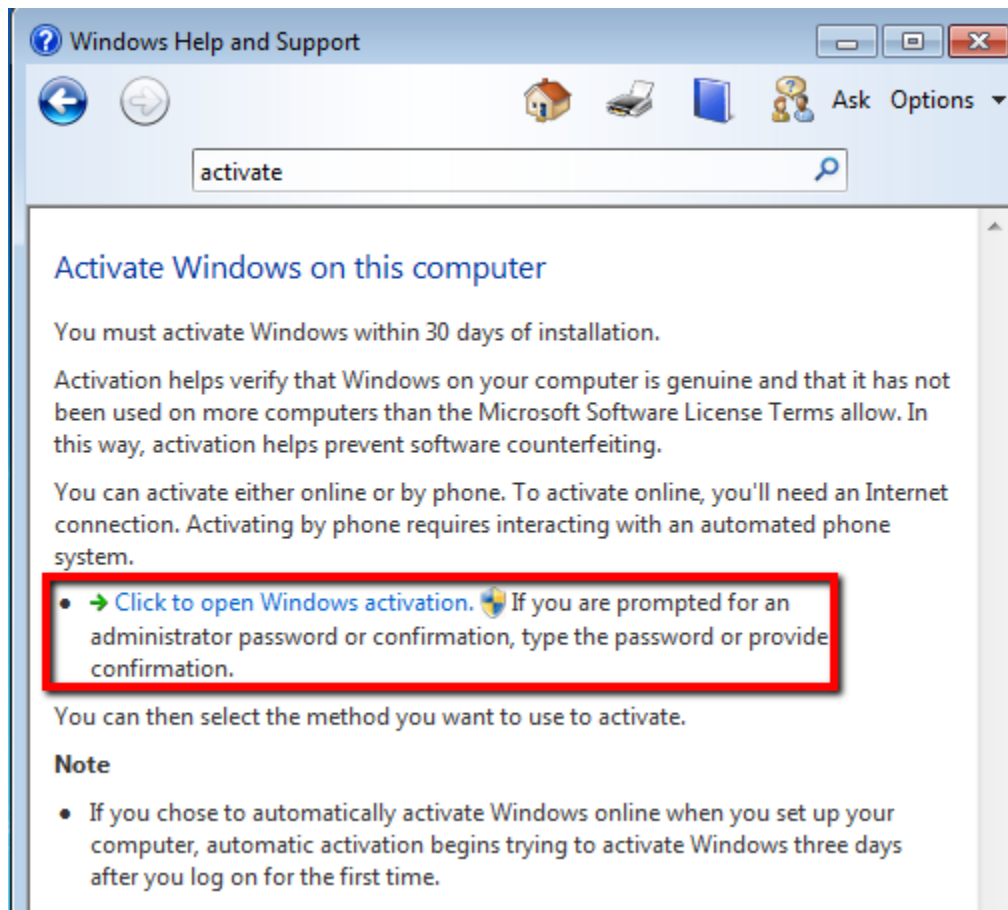
Note: If during the login process you will likely be prompted to define a network type, select Work. Also, you will notice that VMware tools will automatically get installed, this is OK.



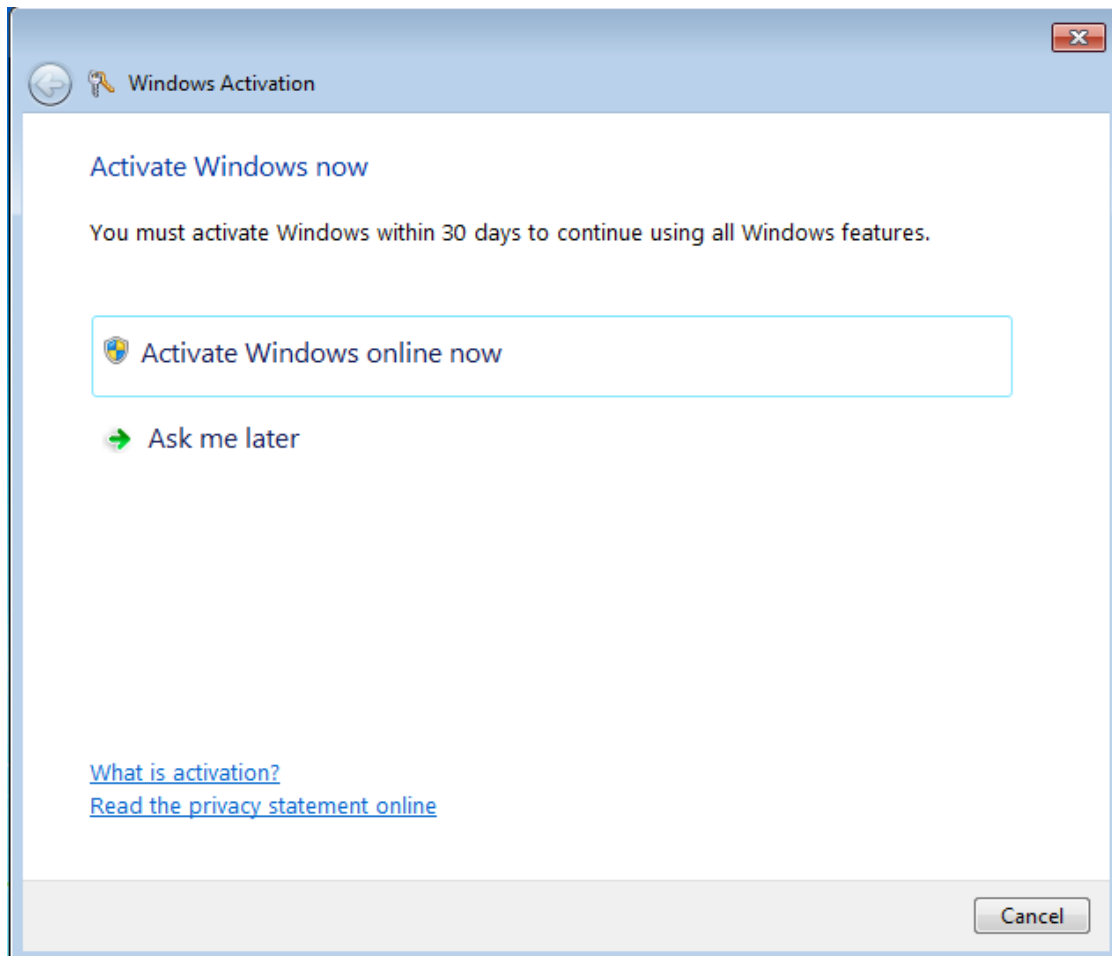
12. Now activate your operating system by performing the following steps:
13. Click **Start -> Help and Support**.
14. Type **Activate** in the search help box and press <Enter>
15. Click **Activate Windows on this computer**. See image below.



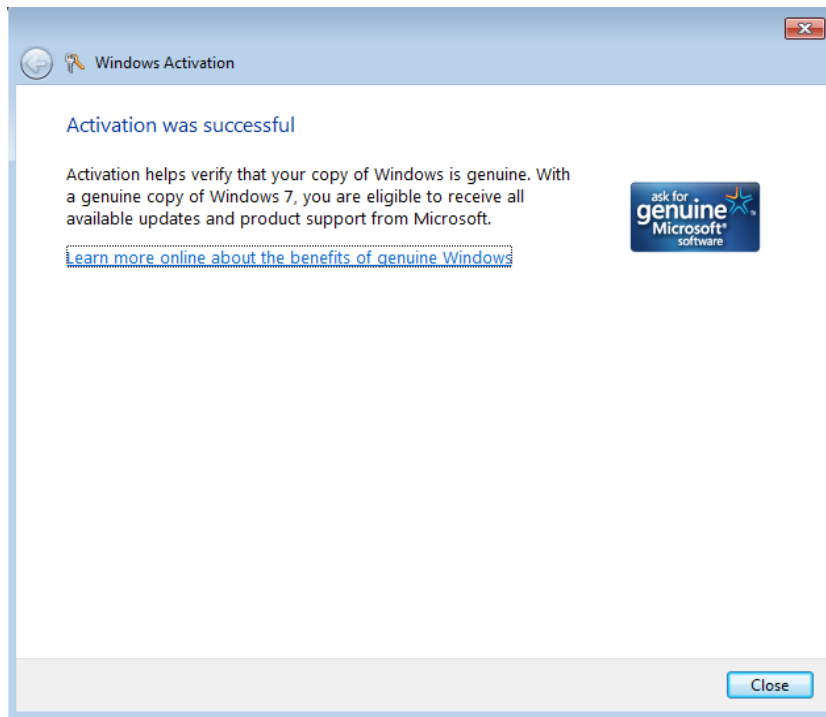
16. Read the information about activation and then click **Click to open Windows activation**. See image below.



17. Click **Activate Windows online now**. See image below.



18. If you did not enter a product key when the installation of Windows 7 Professional was first initiated, you will be prompted for one now. If so, copy and paste (or manually enter) the product key in the appropriate box. Your product key will be verified and if the product key is valid, your operating system will become activated.
19. Close the **Windows Activation** window shown in the image below.



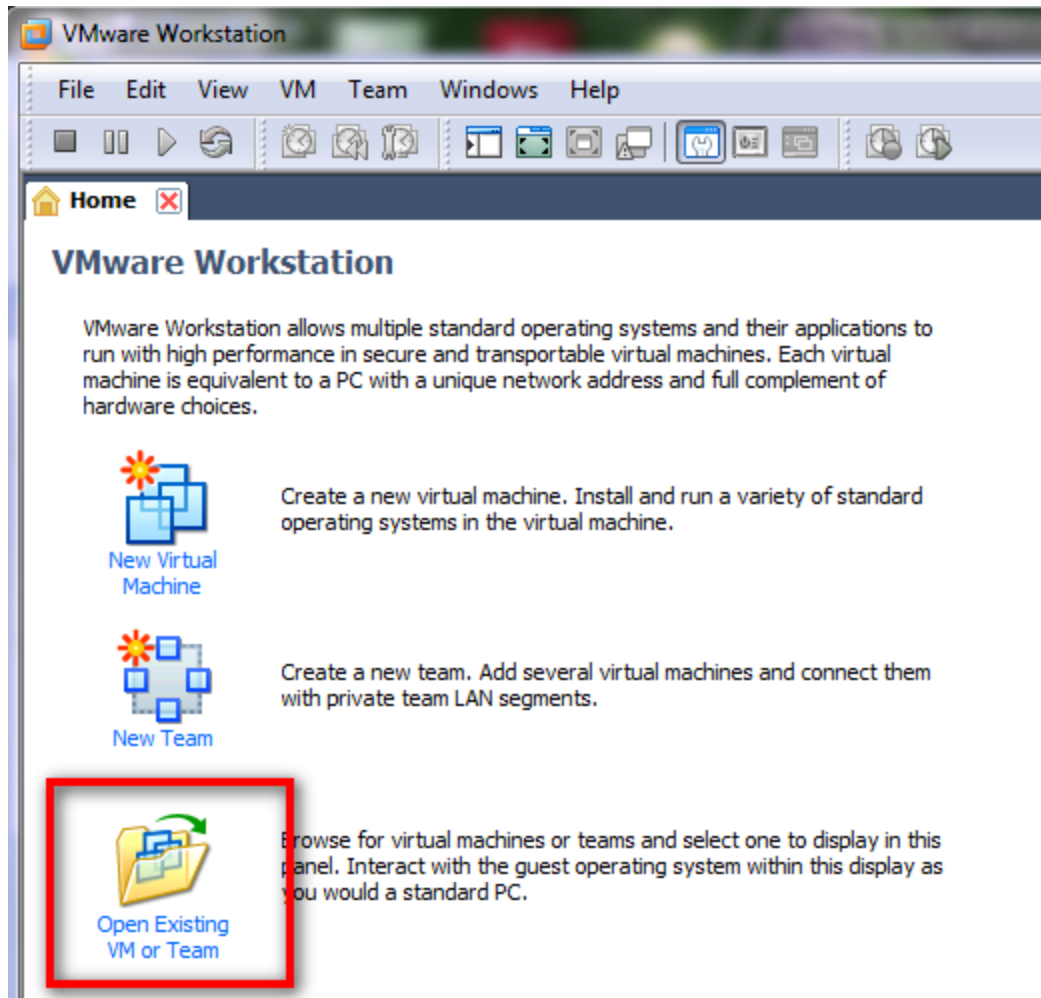
20. At this point you can shut down your virtual PC. Click **Start -> Shutdown**.

21. Continue to Section 3.

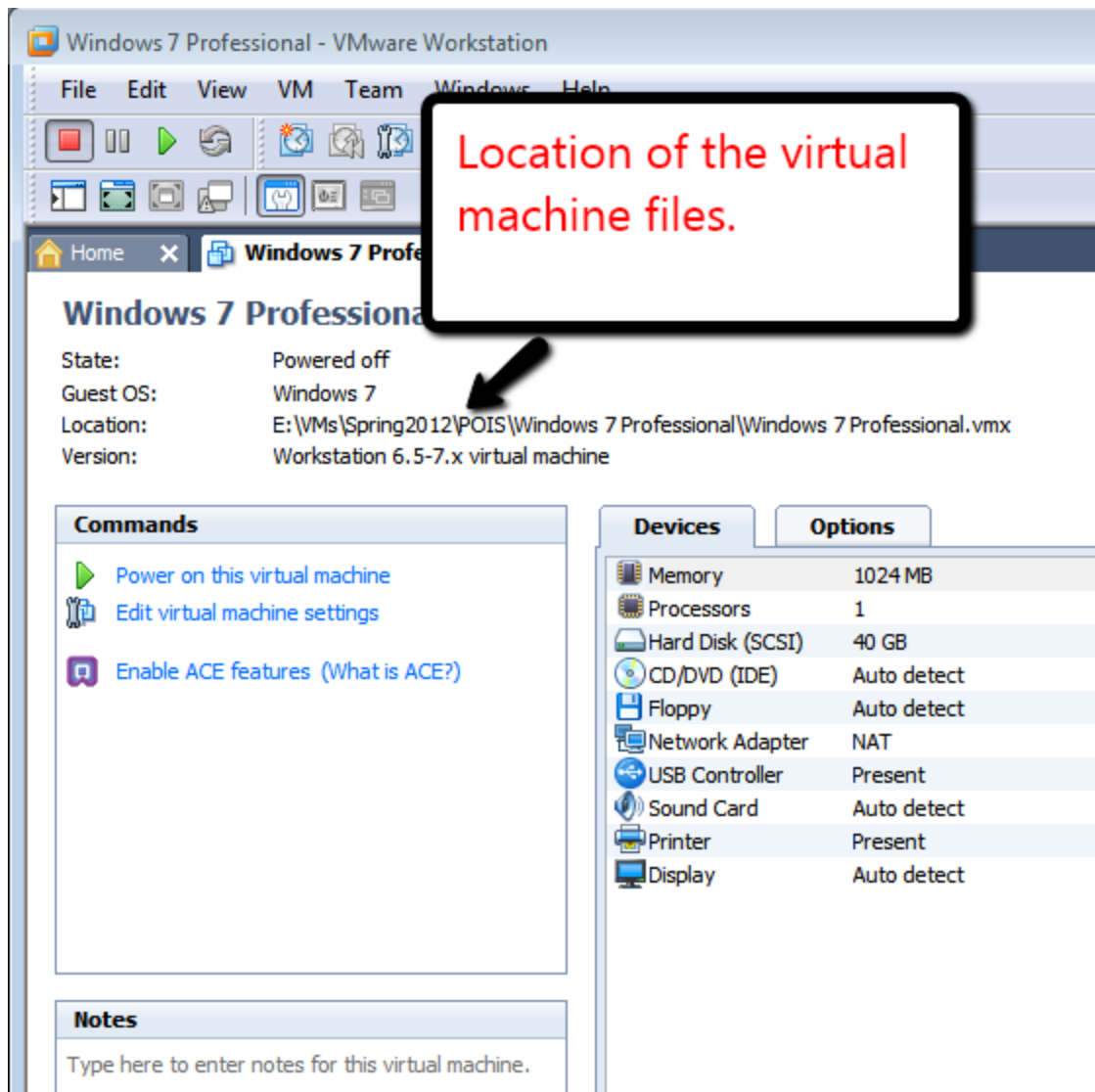
SECTION 3: STARTING AN EXISTING WINDOWS 7 PROFESSIONAL VIRTUAL COMPUTER.

You will continually have to reconnect to the virtual PC that you just created. To do so follow these procedures.

1. Start your VMware Workstation software.
2. When you start your VMware workstation software you may not see a tab showing your Windows 7 Professional virtual operating system. You will have to click Open Existing VM or Team. See image below.



3. When prompted to locate the virtual operating system's configuration file on your USB hard drive, select the Windows 7 Professional.vmx located in the Virtual Machines\Windows 7 Professional folder where you created your virtual machine. You should then get a Windows 7 Professional tab shown in the image below.



- When you get a chance, improve the performance of your virtual machine by removing the Floppy device and the Sound Card device. You can do this by selecting Edit virtual machine settings, select each of the above mentioned devices separately and then remove them by clicking on the Remove button. When finished, click OK.
- To start your virtual machine click the Power on this virtual machine option listed in the Commands section. Your virtual machine will then boot up, thus enabling you to login.
- After you are done using the virtual PC, always shut down the virtual machine from the virtual machine's operating system as instructed in section 2, step 14.

If you wish to view this procedure, click on the image or link below:



<http://coursecontent.ntc.edu/CIT/husband/pois/lp0/Win7ProInstall/Win7ProInstall.html>